



Highwaymans Ridge, Windlesham

£700,000



Highwaymans Ridge, Windlesham

Built by Charles Church, this attractive four bedroom detached home in the popular village of Windlesham with garage conversion creating a more open plan kitchen/dining area.

FEATURES

- 1248 sq ft
- South easterly facing garden
- Double glazing
- Gas central heating
- Easy access to junction 3 of the M3
- Freehold house
- Built in wardrobes

ACCOMMODATION

- Entrance hall
- Downstairs cloakroom
- Three reception rooms
- Kitchen
- Four bedrooms
- Family bathroom

OUTSIDE

- Driveway parking
- Rear garden with patio

EPC RATING

D

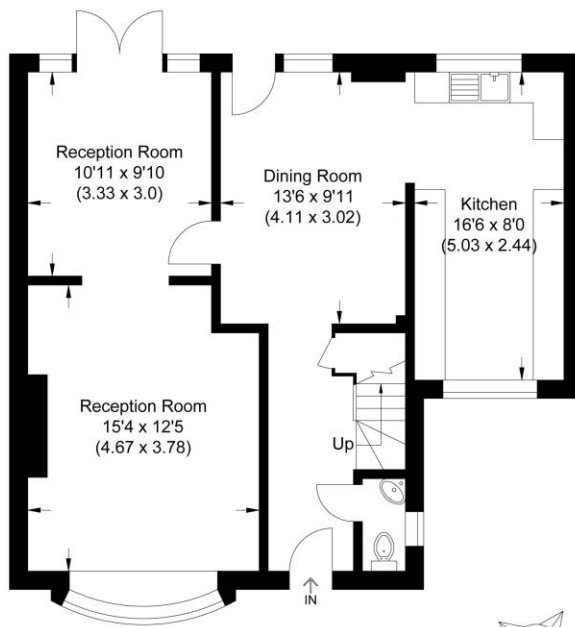
LOCAL AUTHORITY/COUNCIL TAX

Surrey Heath – Band F

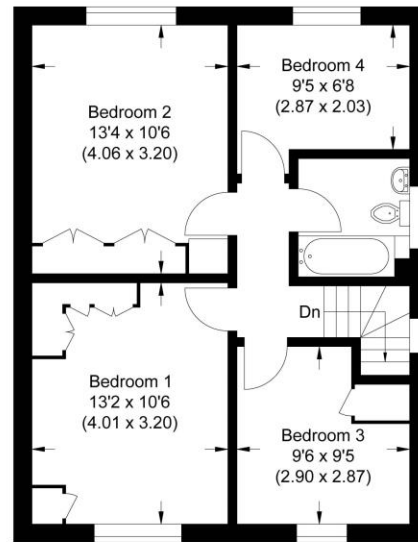




Approximate Gross Internal Area
116.0 sq m / 1248.61 sq ft



Ground Floor

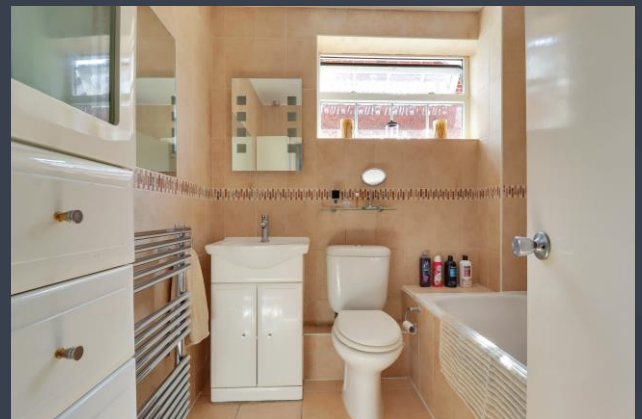


First Floor

Illustration for identification purposes only, measurements are approximate, not to scale.

Disclaimer: We wish to inform prospective purchasers that we have prepared these sales particulars as a general guide. We have not carried out a detailed survey, nor tested the services, appliances and specific fittings. Room sizes are approximate and rounded; they are taken between internal wall surfaces and therefore include cupboards / shelves, etc. Accordingly, they should not be relied upon for carpeting, curtains / blinds and kitchen equipment, whether fitted or not, are deemed removable by the vendor unless specifically itemized within these.

Postcode for sat nav: **GU20 6NF**



NEWTON ROWE
SALES & LETTINGS

The Old Dairy, 7 Updown Hill, Windlesham, Surrey GU20 6AF
enquiries@newtonrowe.co.uk | 01276 986900